



ACU National

Australian Catholic University

Brisbane Sydney Canberra Ballarat Melbourne

POSITION DESCRIPTION

POSITION IDENTIFICATION

POSITION TITLE	SENIOR LECTURER, EARLY CHILDHOOD EDUCATION
WORK AREA POSITION CODE	
FUNCTIONAL UNIT	SCHOOL OF EDUCATION (VIC)
ORGANISATIONAL UNIT	FACULTY OF EDUCATION
CAMPUS	BALLARAT
NOMINATED SUPERVISOR (TITLE)	HEAD OF SCHOOL
CURRENT CLASSIFICATION	ACADEMIC LEVEL C A period of probation will apply to this position.
EMPLOYMENT TYPE	CONTINUING
REMUNERATION & BENEFITS:	A range of generous conditions of employment and entitlements are provided to staff some of these include: generous leave conditions; flexible working conditions; comprehensive Staff Development Programs; salary packaging benefits as a rebate able employer; reward and recognition programs.
<u>Superannuation:</u>	The University will contribute an amount equivalent of up to 17% of your gross annual salary to superannuation dependant on salary level, length of appointment or age.
DATE DEVELOPED/ REVIEWED	July, 2009

BACKGROUND

Australian Catholic University (ACU), a public Catholic university funded by the Australian Government, is open to students and staff of all beliefs.

The University has almost 16,000 students and over 1,200 staff. ACU is a truly national university with six campuses in Australia: Melbourne, Ballarat, Strathfield, North Sydney, Brisbane and Canberra. The Vice-Chancellor's Office is located in North Sydney.

The structure to support this complex and national University consists of:

- Four Pro-Vice-Chancellors with responsibilities for the following national portfolios:
 - Academic
 - Research
 - Students, Learning and Teaching
 - Administration and Resources.

Each portfolio consists of a number of Faculties/Schools, Directorates or Institutes:

- Five Associate-Vice-Chancellors or Campus Deans that focus on the University's local presence and development of the University at the local 'campus' level
- A Directorate of Identity and Mission that drives both the Identity and the Mission of the University and includes a number of Institutes and Directorates
- University Relations that leads the University's marketing, student recruitment and communications functions.

ACU is dedicated to rigorous intellectual scholarship and the individual's pursuit of truth and academic freedom. Its ethos reflects Christian values and its core concerns are with ethics and morals in all fields of its endeavour.

The University has a reputation for quality and innovative teaching in the context of a personalised learning environment and for highly qualified academic staff with a commitment to student-centred learning. ACU currently has four Faculties – Arts and Sciences, Education, Health Sciences and Theology and Philosophy with the Faculty of Business (commencing in 2010), which provide specialist education in the arts, business and informatics, social sciences, theology, education and health. Graduates consistently give a high rating of their educational experience at ACU. The University has one of the highest graduate employment rates in the country and its graduates are high achievers in commerce, education, health, the humanities, science, technology and the creative arts. It has a reputation for providing a supportive learning environment for Indigenous students with a high percentage of Indigenous students enrolling and graduating.

ACU is committed to fostering and promoting research in the widest and richest sense in accordance with its character and mission. ACU values research as much as teaching. In pursuing its research mission, the University aims to strengthen its research training environment and promote public intellectual engagement with its communities, as well as increase the number of its higher degree research graduates.

FACULTY OF EDUCATION

The Faculty of Education is located across five campuses of ACU and is one of the largest faculties of education in Australia. The Faculty is structured into six Schools and there are two University priority research centres based in the Faculty:

The Schools are:

- School of Educational Leadership (national)
- School of Religious Education (national)
- School of Education (ACT)
- School of Education (NSW)
- School of Education (Qld)
- School of Education (Vic).

The University Research Priority Centres are:

-
- Centre for Creative and Authentic Leadership
 - Mathematics Teaching and Learning Research Centre.

The Faculty is committed to capitalising on the collective educational and research strength that comes from working collegially across campuses. As such, research interest groups, mentoring and course and unit development generally involve academic staff from the different campuses.

Through its Schools, the Faculty offers nationally recognised undergraduate, postgraduate and research degrees in various modes on campus and at off-campus locations, including East Timor, Mauritius, New Zealand and Pakistan. The Faculty offers in a community-based and campus mode for Indigenous students: early childhood, primary and secondary teacher education programs through the Strathfield campus, and primary teacher education through the Brisbane campus.

As a community of scholars committed to the goals of making a positive difference through education, the Faculty actively encourages and supports quality teaching and learning activities, the production of scholarly research and engagement with the community by its staff and students. Faculty staff supervise students enrolled in research degrees of Master of Education (Research), Doctor of Philosophy and Doctor of Education.

The Faculty has engaged with the new directions set out in the University's strategic plan (2009-2011). It has defined performance targets in growth and excellence for the student experience; collaborative and productive research; an authentic expression of its Catholic identity and mission; and a culture of service and collegiality that enables and supports its teaching and research priorities.

The Faculty is in a period of dynamic change positioning itself to be a leading teaching and research Faculty. The Faculty's courses are developed within the Catholic intellectual tradition with the goal of preparing global educators for contemporary learning communities and with emphases on educating for social justice and equity, and sustainability.

The Faculty's three research priorities are summarised as Quality, Equity and Diversity in Education. Its current strengths are defined as mathematics education, educational leadership and religious education, with emerging strengths in Indigenous education. Additional priorities are literacy education, wellbeing and inclusive education and teacher education. The Faculty's research is characterised by collaborative partnerships with external organisations. It aims to have a positive impact on policy and practice for quality and inclusive education that leads to more equitable outcomes for all. A collaborative and supportive environment supports staff in their research endeavours.

THE SCHOOL OF EDUCATION (Victoria)

The School of Education (Victoria) is based on two campuses: Ballarat and Melbourne. It has a long tradition of providing teacher education programs and research in primary and secondary education and has a rapidly expanding the Early Childhood suite of programs. Early Childhood Education was introduced at the Ballarat campus in 2008 and on the Melbourne campus in 2009.

With a value-based, holistic, learner centred approach, the School strives to produce graduates who are motivated and committed to their own continual growth and development in their profession.

POSITION PURPOSE

The successful applicant to this position will undertake teaching, research, scholarship and administration in early childhood education. The successful applicant will be expected to provide dynamic leadership in teaching, promote partnerships with early childhood education providers and community organisations and to contribute to the research and publication agendas of the Faculty and School. The appointee will be expected to collaborate with colleagues on other campuses to develop the learning and teaching and research profile in Early Childhood Education. The successful applicant must be prepared to work on both campuses when required but the position is based at the Ballarat campus.

POSITION RESPONSIBILITIES

This position is responsible for:

1. Developing and implementing contemporary and innovative approaches to pre-service and post-graduate teacher education in Early Childhood Education
2. Coordinating Early Childhood education courses and programs delivered by the School, including coordinating units and/or subject area
3. Collaborating with colleagues across the Faculty, particularly at both Ballarat and Melbourne campuses, contributing to the design, development, implementation and academic administration of programs and units of study, professional learning and research into learning and teaching that are student centred
4. Applying a range of learning technologies to early childhood and primary education courses in different modes including online, flexible, intensive and electronic approaches to teaching and learning
5. Supervising programs of study by postgraduate students engaged in course work and professional learning
6. The conduct of research and scholarly writing in an Early Childhood discipline including supervision of research higher degree students
7. Developing relationships with a range of external partners, to enhance community engagement projects, professional learning projects and research with partner organisations
8. A range of administrative functions to support teaching and research in Early Childhood
9. Involvement in professional activities
10. Making a significant contribution to the profession, and/or discipline
11. Attendance at School and/or Faculty meetings and/or membership of a number of both internal and external committees
12. Articulating the values and ethos of Catholic Identity and Mission and its link to learning, teaching, research and community engagement.

SELECTION CRITERIA

Essential

At Level C

1. Possession of a doctoral qualification or equivalent in the disciplinary field of early childhood education
2. Demonstrated capacity for leadership in innovative, dynamic, contemporary and effective student-centred teaching approaches in pre-service and post-graduate education and professional learning programs in the area of early childhood and primary education
3. Demonstrated advanced understanding and application of technology in education, preferably in teaching and learning in Early Childhood Education

-
4. Demonstrated capacity for originality in research that is influential and significant in expanding the knowledge of the discipline, including a publication record and success in attracting research support in the area of early childhood and primary education
 5. Demonstrated strong interpersonal and communication skills and the ability to work effectively in teams and motivate and influence peers and students
 6. Record of contribution to administration in a University or professional setting and to interact effectively within these settings
 7. Demonstrated leadership capability in working with teams in the development of programs in early childhood education in higher education
 8. Demonstrated evidence of the nexus between teaching and research in their approaches to teaching and learning, research and scholarship
 9. Demonstrated capacity to develop partnerships and links with professional bodies and industry partners in the area of early childhood and primary education
 10. Demonstrated commitment to the specific mission and Catholic ethos of the institution, to cultural diversity and ethical practice principles, and demonstrated knowledge of equal employment opportunity and occupational health and safety, appropriate to the level of the appointment
 11. Evidence of current Working with children police check clearances.

Desirable

1. Demonstrated capacity to teach in one or more of the curriculum areas within early childhood and primary education
2. Experience in and knowledge of the Catholic education system
3. Active involvement in professional conferences and seminars
4. Membership of appropriate early childhood and primary education professional bodies.

MINIMUM STANDARDS FOR ACADEMIC LEVELS

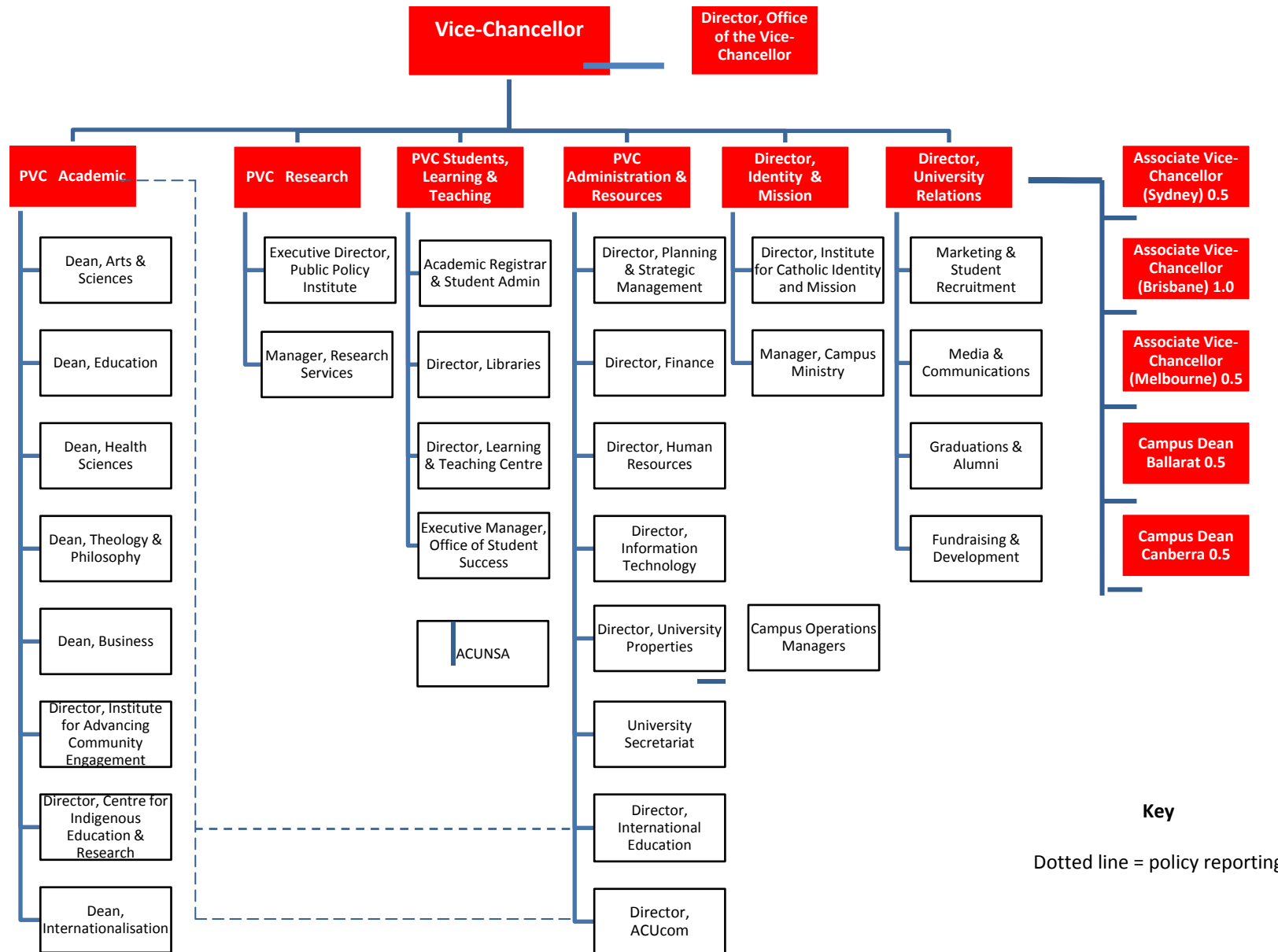
Level C

A Level C academic will make a significant contribution to the discipline at the national level.

In research and/or scholarship and/or teaching he or she will make original contributions, which expand knowledge or practice in his or her discipline.

A Level C academic will normally make a significant contribution to research and/or scholarship and/or teaching and administration activities of an organisational unit or an interdisciplinary area at undergraduate, honours and postgraduate level. He or she will normally play a major role or provide a significant degree of leadership in scholarly, research and/or professional activities relevant to the profession, discipline and/or community and may be required to perform the full academic responsibilities of and related administration for the coordination of a large award program or a number of smaller award programs of the institution.

Australian Catholic University Organisation Chart



Key
 Dotted line = policy reporting